

Steel ball valves, reduced bore

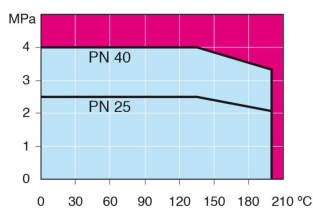
flange/flange, DN 700-800, PN 25

- Body: DN 10–500 Steel, P235GH (1.0345)
 DN 600–800 Steel, P355 NL1 (1.0566)/ GP240GH (1.0619)
- Ball: DN 10–600 Stainless steel, X5CrNi18-10 (1.4301)
 DN 700–800 Steel + stainless plating, ASTM A350 LF2+Ni
- Stem: Stainless steel, X8CrNiS18-9 (1.4305)
- Stem seals: FPM
- Ball seals: PTFE+C
- Flanges: EN 1092-1
 Available PN 10, 16, 25, 40
- Equipment: lifting lugs, drain valve, mounting stand
- Operation: Valves are available with manual gear or with an electric or hydraulic actuator: www.vexve.com/en/actuators

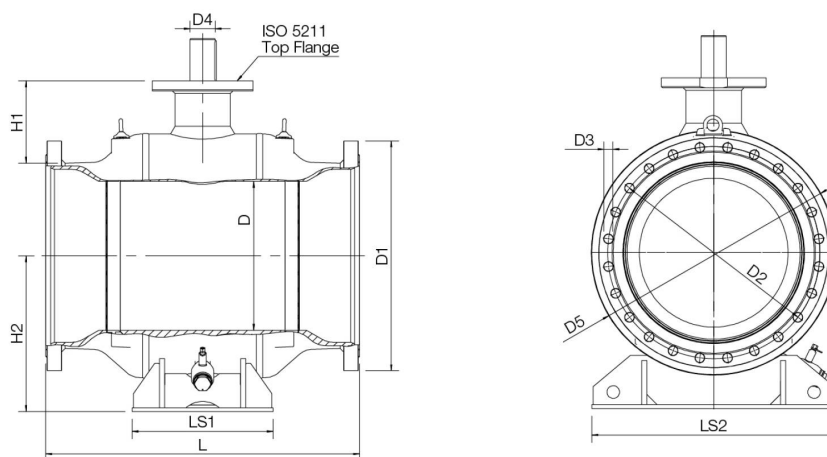


Operating conditions

-30°C - +200°C
 Below 0 °C contact manufacturer



Not for steam



Product no. Vexve	DN	PN	D	D1	D2	D3	D4	D5	H1	H2	L	LS1	LS2	Holes	ISO 5211	kg
103700/25	700	25	589	960	875	42	120	965	325	616	1245	560	965	24	F35	2900
103800/25	800	25	684	1085	990	48	140	1125	358	694	1427	700	1028	24	F35	4400